



COLMAR T10000 EXT COUNTERWEIGHT

The Colmar T10000 is the industry professional when it comes to heavy lifting / piling, with its huge 10t lift capacity and extendable counterweight makes it tonnes above the rest.

Recently fitted with a brand new GKD Series 3 Space guard (High performance movement limiting device) RCI to maximise the machines performance and lifting capacity in the safest possible working environment.

This machine is the perfect RRV to do all the heavy lifting on track such as pre-cast concrete foundations, stillages, on site concrete mixing, large timber removal and all things piling.

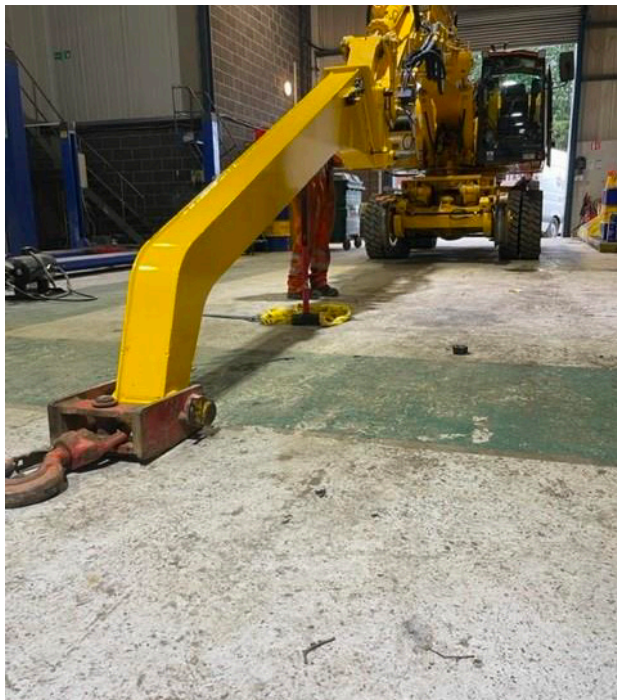
Weight	32000kgs
Gauge	W6a
Rail Type	9B
On / Off Track Cant	150mm
Max Travel Cant	200mm
Max Working Cant	150mm
Max Gradient	1 in 25
Max Trailing Load	46000kgs
Max Reach	7m
Max Lift Capacity	10t
ALO Capable	YES
Travel Under Live OLE	YES
Work Under Live OLE	YES

Compatible Attachments

- HR2750 Fambo Drop Hammer
- EMV Hammer
- Movax Hammer
- 10t Lifting Hook



The Colmar T10000 pictured at Golden Vally Light Railway installing new CHS piles.



A vast range of attachments are associated with the Colmar T10000 RRV including the 5m Rhino Horn.

Get in touch
info@elmecsolutions.com
01773 533 000

ELMECSolutions
elmecsolutions.com